



Grundtvig Learning Partnership

E-MAP

self-Evaluation and Monitoring for small Adult education Providers

Budapest (Hungary), 18°, 19°, 20° November 2011

ABOUT US...

Link Consulting was founded in 1997 by a group of professionals gathered for years experiences in different sectors as planner, educator and accounting administrator.

It provides services aimed at making firms more competitive by developing their technological capabilities through the **design, implementation and consolidation** of customised processes of innovation and improving their market positions by helping them stand out from their competitors as drivers for innovation.

As vocational training centre is a leading institute of employee-oriented vocational education and continuing training. The company is subject to the international standard **ISO 9001** and European standard **EMAS**. Thus measures and employees have to meet strict quality criteria.



SERVICES...

Link Consulting operates in different main areas: **innovation, training, marketing research, and renewable energy consultancy**. These areas are the mainstays for a number of specific services targeted at private firms and public administrations.

In **private business** *Link Consulting* provides services to industrial and service-sector SMEs and large-scale companies alike that need support in matters concerned with the overall management of their innovation-related activities (innovation, technology, renewable energy).

By means of integrated, it helps companies to improve their positioning internally and externally through the application of new technologies, innovative projects and actions.



In the **public sector** *Link Consulting* focuses on **regional, national and international level** public administrations that need external expert support to set up or monitor innovation policies or to manage their program so that they run properly.



Using methods and tools developed in-house, along with **innovative elements** created ad hoc for each customer, *Link Consulting* gradually becomes a close collaborator capable of successfully meeting the challenges posed by each project.

Link Consulting performs the following tasks, among others:

- **Drawing up and implementation** of strategic innovation plans
- **Support** in drawing up strategies for diversifying business operations
- **Preparation and integrated management** of international projects based on co-operation.
- **Implementation** of quality management systems (ISO 9001 and EMAS)





TRAINING
ACTIVITY...

Link Consulting has many experiences in the **training** sector.

With the broad experience in business management, the support of training framework that has proved its worth in numerous **courses and programs** and a team of **highly skilled instructors**, it specialises in designing and providing high-quality training programs in different areas, reaching **from IT and communications technologies, languages, business, management, tourism, environment, metal trades.**

Training aims at contributing to the **growth of the participants' professional skills and competences** and to the economical development.

Target group are both employed and unemployed persons.



Link Consulting meets the demand by setting up **international projects** to develop and carry out educational measures in an European context.

It is responsible for initiating, coordinating and managing international projects under **European action programs** for education and continuing training (**Leonardo da Vinci, Grundtvig**), and various budget lines of the European Commission (**ESF, FESR**).

The Europe-oriented further training projects which are co-financed by the European programs mentioned **contribute to impart a maximum of topical knowledge** to our participants and to **improve** their chances in a common market.

EUROPEAN
PROJECT
ACTIVITY

Leonardo da Vinci Program

Pilot training project: UNDERSTAND (2006-2008) intended for the emergency planners and emergency operators of the European energy supply.

Mobility projects:

Lucus (2006) – Cultural heritage management for unemployed youth.

Basileus (2007) - Tourism and Cultural Heritage

Transference of innovation sub-programm:

CHEMIFOR (2008-2010), development of vocational self-training methods at the workplace using open and distance learning and training methods, particularly to facilitate the access to continuous vocational training.

EEGS (2010-2012), introduction of a management system of ITC content in VET and learning providers

ENESME (2009-2011) helps manager and technicians gain ability to improve energy efficiency in SMEs

NTNC (2011-2013) offers to training professionals pedagogical tools needed to train learners in non formal and informal competences demanded by companies

PROJECTS



Grundtvig Program

Learning Partnership:

SKILLS – Development of key competence learning to learn in the lifelong learning (2006-2008)

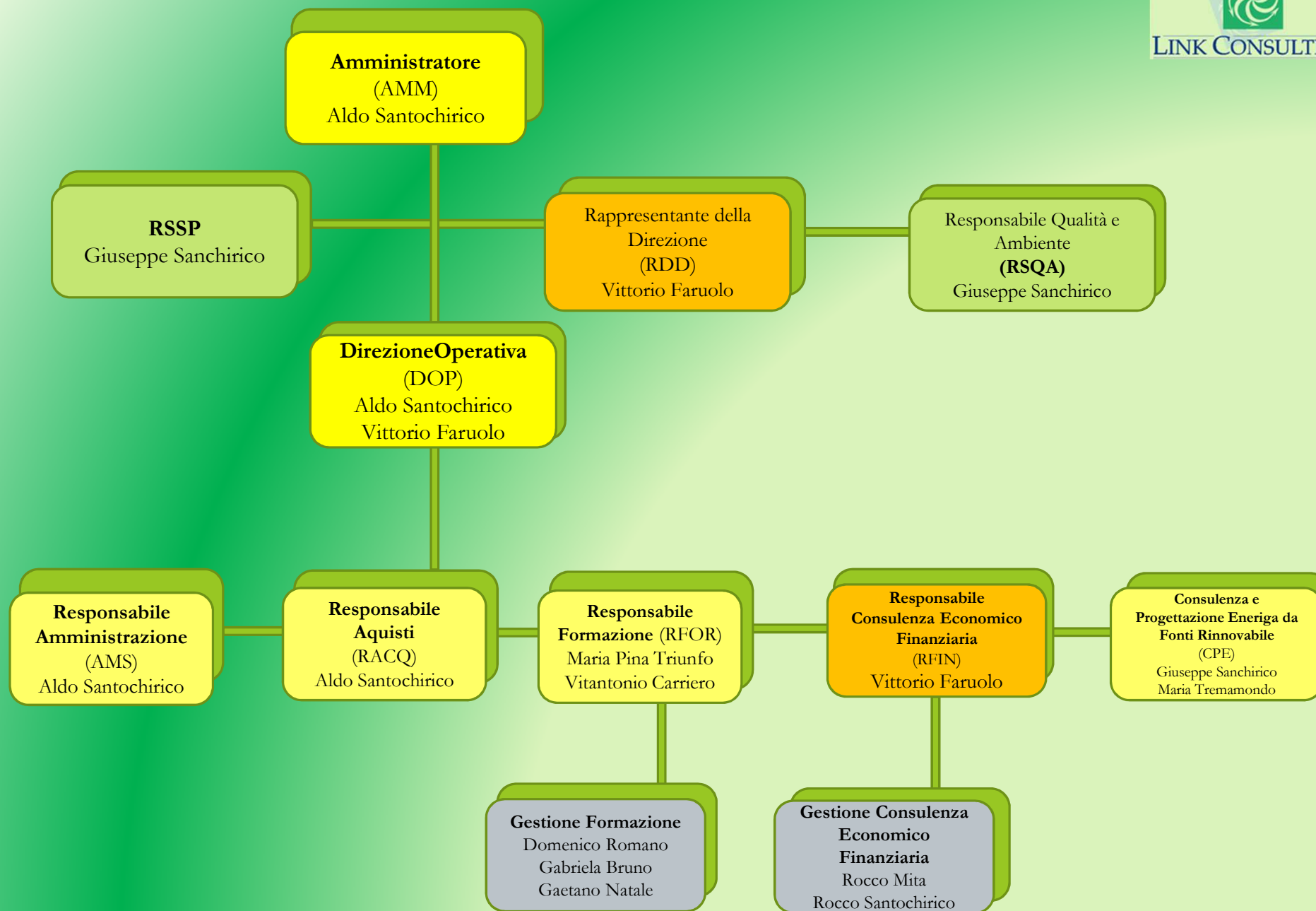
K-Learning - Key competencies learning : different European approaches (2009-2011)

Multilateral:

SKILLS – Several Keys in Learning to Learn Skills (2007-2009)



PROJECTS



THANK YOU FOR YOUR KINDLY ATTENTION

LINK CONSULTING srl

I^ Traversa Via del Gallitello, snc

85100 Potenza – Italy

Tel.0039 0971 54742

www.linkconsulting.it

Ref. Maria Pina TRIUNFO

E-mail: formazione@linkconsulting.it



LINK CONSULTING